



# INDUSTRIAL WAREHOUSE FOR LEASE

3821 Anderson Road, DeForest, WI 53532

## PROPERTY FEATURES

- Total Building: 52,000 SF
- Divisible to: 16,000 SF
- Great interstate visibility
- 3.35 acre lot
- Ample parking
- Municipal sewer and water
- 1,600 amp electrical service
- (5) 8'x6"x10' dock high doors with pit levelers
- (3) 12'x14' Overhead doors



## PROFESSIONALLY MANAGED BY:

Investors Associated, LLP  
2310 Crossroads Drive, Suite 1200  
Madison, WI 53718

## FOR LEASING INFORMATION:

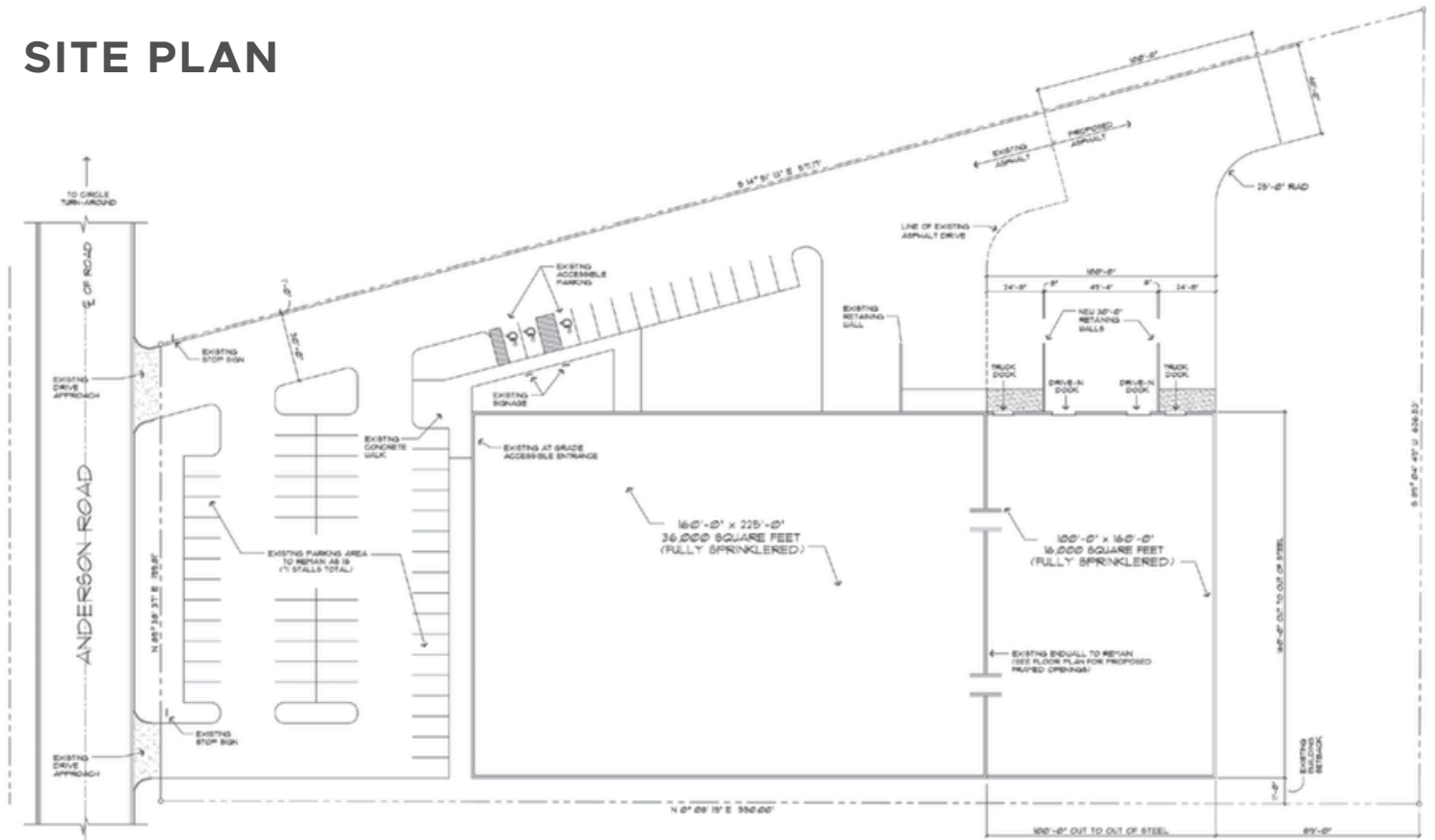
Ben Hurd  
608.828.8888  
bhurd@iallp.com

Travis Bouzek  
608.390.3654  
tbouzek@iallp.com

# INDUSTRIAL WAREHOUSE FOR LEASE

3821 Anderson Road, DeForest, WI 53532

## SITE PLAN



### PROFESSIONALLY MANAGED BY:

Investors Associated, LLP  
2310 Crossroads Drive, Suite 1200  
Madison, WI 53718

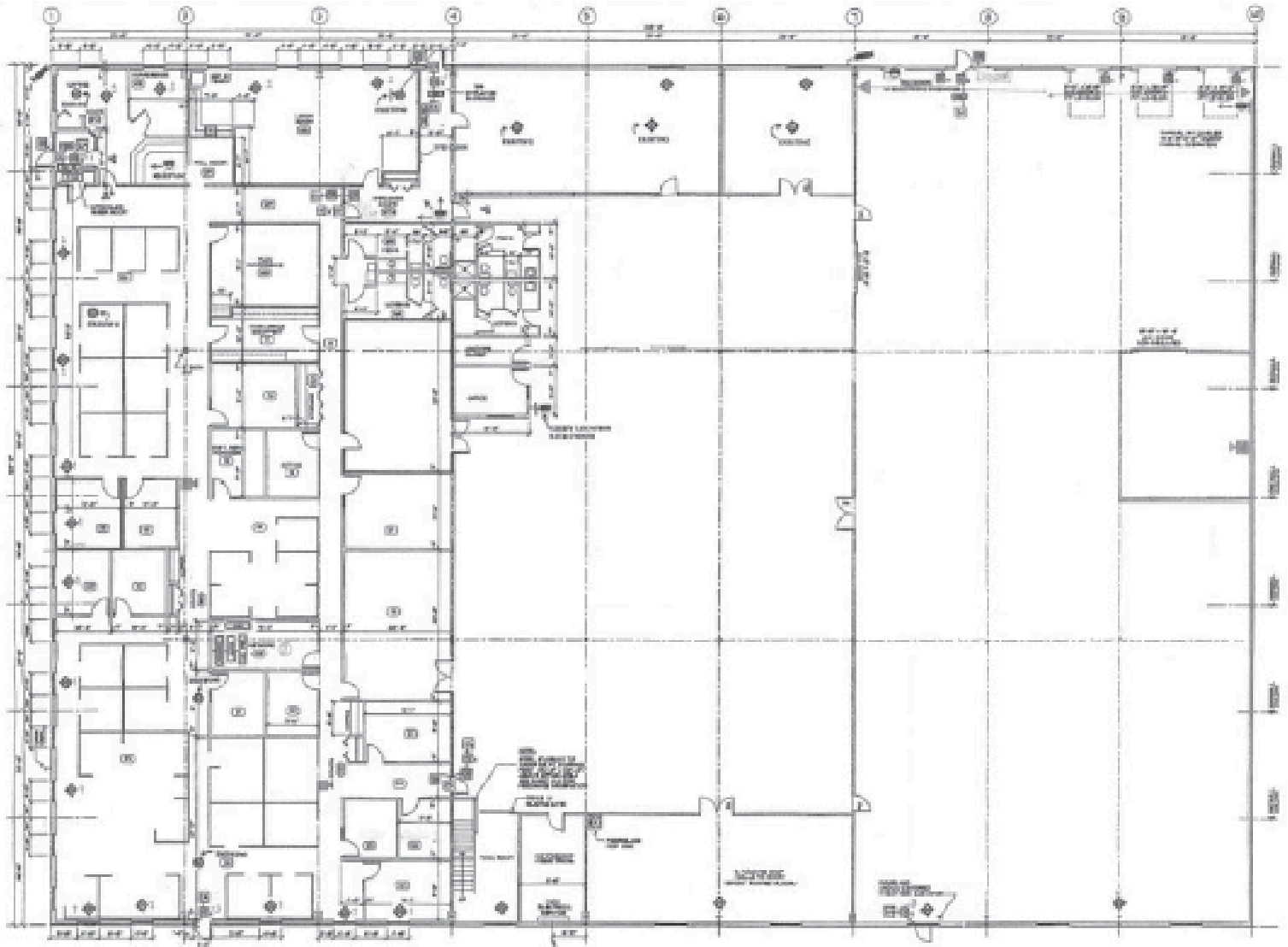
### FOR LEASING INFORMATION:

Ben Hurd  
608.828.8888  
bhurd@iallp.com

Travis Bouzek  
608.390.3654  
tbouzek@iallp.com

# INDUSTRIAL WAREHOUSE FOR LEASE

3821 Anderson Road, DeForest, WI 53532



## PROFESSIONALLY MANAGED BY:

Investors Associated, LLP  
2310 Crossroads Drive, Suite 1200  
Madison, WI 53718

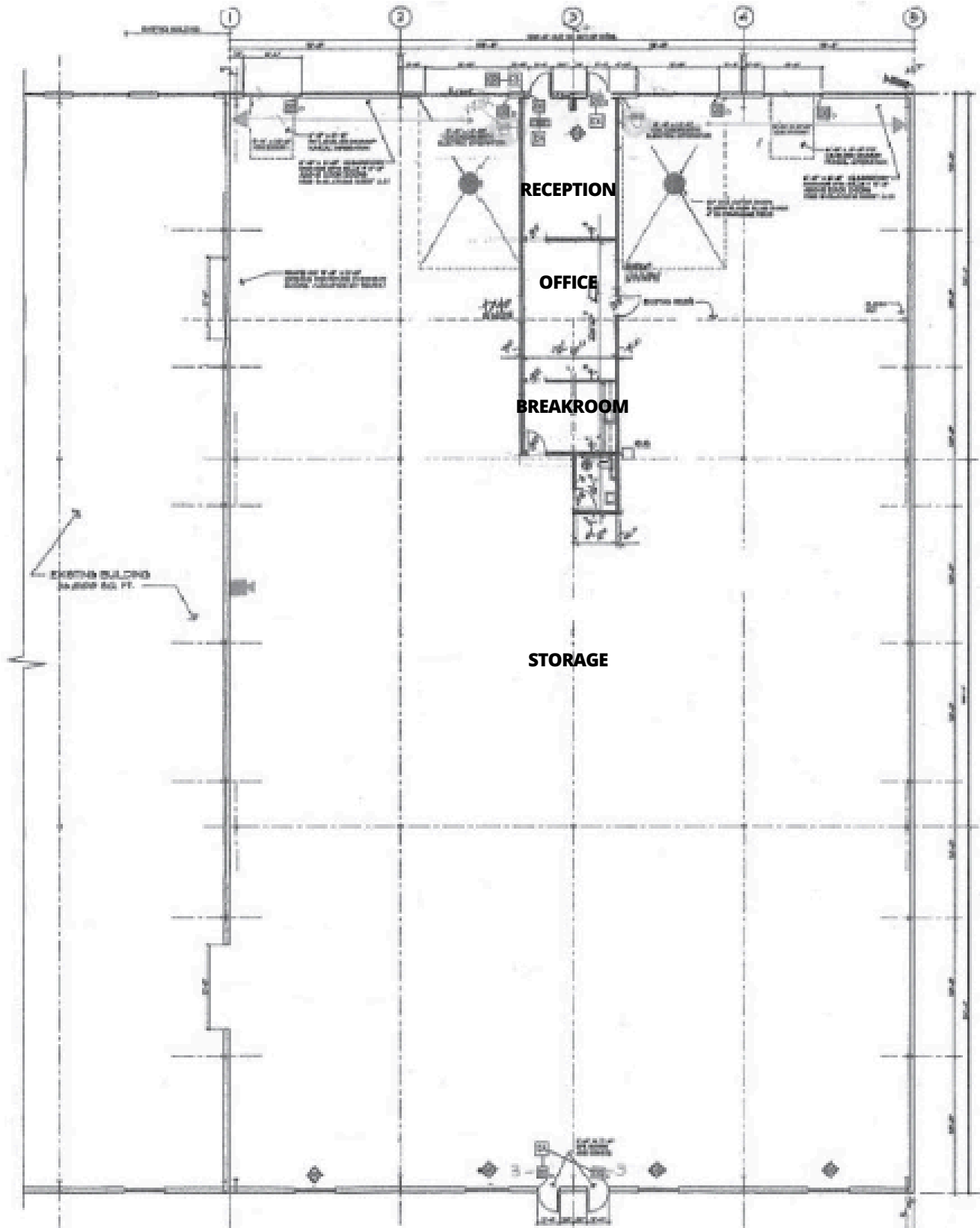
## FOR LEASING INFORMATION:

Ben Hurd  
608.828.8888  
bhurd@iallp.com

Travis Bouzek  
608.390.3654  
tbouzek@iallp.com

# INDUSTRIAL WAREHOUSE FOR LEASE

3821 Anderson Road, DeForest, WI 53532



## PROFESSIONALLY MANAGED BY:

Investors Associated, LLP  
2310 Crossroads Drive, Suite 1200  
Madison, WI 53718

## FOR LEASING INFORMATION:

Ben Hurd  
608.828.8888  
bhurd@iallp.com

Travis Bouzek  
608.390.3654  
tbouzek@iallp.com