



2310

CROSSROADS DRIVE
MADISON, WI

OVERVIEW

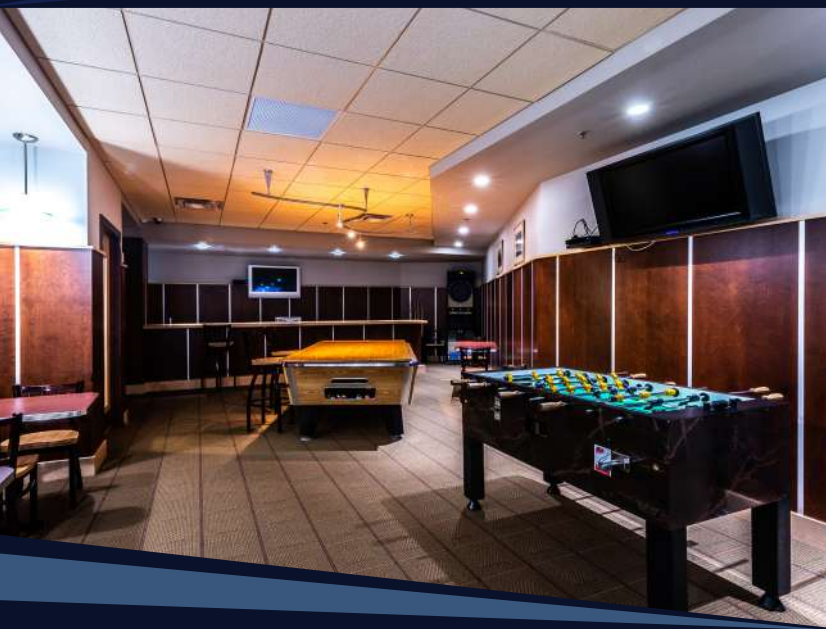
Built in 2006, 2310 Crossroads Drive is a five-story building totaling 68,436 square feet. It has concrete construction with brick accents, as well as outdoor patios, high-end finishes, and views of the Capitol building. Accessibility from the 90/94 major interstate corridor makes this property easy for customers to find you.

LOCATION

As part of The Park at High Crossing, this building is conveniently located along Interstate 90/94/39 and minutes from downtown Madison. Nestled between two vibrant retail areas, East Towne Mall and Prairie Lakes Shopping Center, many shopping and dining options are in close proximity.

AMENITIES

This property has a large conference room and a pub-style breakroom equipped with a pool table, foosball table, and dart board. Tenants have access to all fitness facilities, conference centers, and boardrooms throughout The Park at High Crossing. Our in-house team of first-class property and maintenance personnel are always available to make sure things are running smoothly!



CONTACT BEN HURD
608.828.8888 | info@iallp.com



BUILDING DETAILS

YEAR BUILT	2006
NUMBER OF FLOORS	5
PARKING	Surface
BREAK ROOM/LOUNGE	Yes
CONFERENCE ROOM	Yes
EXERCISE ROOM	No
SHOWER	No
ELEVATOR	Yes
CONSTRUCTION TYPE	Tilt-up concrete with brick
BUILDING SECURITY	Keycard entry
PHONE/CABLE/INTERNET	TDS Metrocom/Charter Communications/AT&T
SIGNAGE OPPORTUNITIES	Monument and suite included Building negotiable
NUMBER OF COMMON AREA RESTROOMS	10
ADA COMPLIANT	Yes
HIGHWAY EXPOSURE	Yes
OUTDOOR SEATING	Yes